



LCD MONITOR

quick start guide

320 PX



- Safety Instructions
- Introduction
- Package Contents
- Your LCD Display
- Mechanical Layout
- Connections
- Using the Software
- Adjusting the LCD Display
- Troubleshooting
- Specifications
- Information
- Appendix

SyncMaster

www.samsung.com



Model

The color and appearance of the product may vary depending on the model, and the product specifications are subject to change without prior notice for reasons of performance enhancement.

Introduction

Package Contents

Note

- Please make sure the following items are included with your LCD Display.

If any items are missing, [contact your dealer](#).
[Contact a local dealer](#) to buy optional items.

Note

- This stand is not for the Floor Standing Type.



LCD Display

Manuals



Quick Setup Guide



Warranty Card
(Not available in all locations)



User's Guide, MDC Software

Cables



D-Sub Cable



Power Cord

Other



Remote Control



Batteries (AAA X 2)
(Not available in all locations)



Cover-Hole



BNC to RCA
Adaptor Jack



Semi Stand

Sold separately



Wall Mount KIT



Speaker Set



Stand KIT



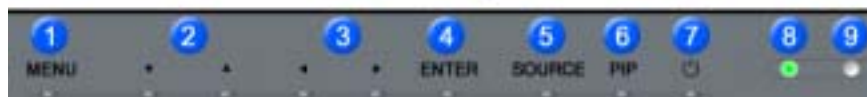
DVI Cable



BNC Cable

Your LCD Display

➤ Front



- 1) **MENU**
Opens the on-screen menu and exits from the menu or closes the adjustment menu.
- 2) **Navigate buttons (Up-Down buttons)**
Moves from one menu item to another vertically or adjusts selected menu values.
- 3) **Adjust buttons (Left-Right buttons)/ Volume buttons**
Moves from one menu item to another horizontally or adjusts selected menu values.
Adjusts the audio volume.
- 4) **ENTER**

Activates a highlighted menu item.

5) SOURCE

Switches from PC mode to Video mode.

Changing the source is only allowed for external devices that are connected to the LCD Display at the time.

[PC] → [BNC] → [DVI] → [AV] → [S-Video] → [Component]

>> [Click here to see an animation clip.](#)

6) PIP

Push the PIP button to turn the PIP screen On / Off.

More than one PIP cannot overlap on screen as BNC and the component use the same terminal.

>> [Click here to see an animation clip.](#)

- **PC**

AV / S-Video / Component Mode

- **BNC**

AV / S-Video Mode

- **DVI**

AV / S-Video / Component Mode

- **AV / S-Video**

PC / BNC / DVI Mode

- **Component**

PC / DVI Mode

7) Power button

Turns the LCD Display On/Off.

8) Power indicator

Shows PowerSaver mode by blinking green.

9) Remote Control Sensor

Aim the remote control towards this spot on the LCD Display.

Note

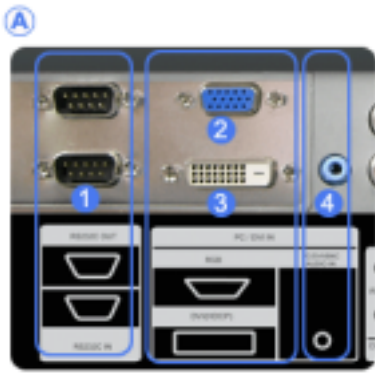
- See [PowerSaver](#) described in the manual for further information regarding power saving functions. For energy conservation, turn your LCD Display OFF when it is not needed or when leaving it unattended for long periods.

Rear

Note

- For detailed information concerning cable connections, refer to Connecting Cables under Setup. The LCD Display 's configuration at the back may vary slightly depending on the LCD Display model.





MDC(Multiple Display Control) Program Port

- 2) **DVI / PC IN [RGB] (PC Video Connection Terminal)**

Using a D-Sub Cable (15 pin D-Sub) - PC mode (Analog PC)

- 3) **DVI / PC IN [DVI(HDCP)] (PC Video Connection Terminal)**

Using a DVI Cable (DVI-D to DVI-D) - DVI mode (Digital PC)

- 4) **DVI / PC IN [PC/DVI/BNC AUDIO IN] (PC/DVI/BNC Audio Connection Terminal (Input))**



- 5) **COMPONENT AUDIO IN [L-AUDIO-R] (Component Audio Connection Terminal (Input))**

- 6) **BNC/COMPONENT OUT [R/Pr, G/Y, B/Pb, H, V] (BNC/Component Connection Terminal (Output))**

BNC (Analog PC) Connection: connecting the R, G, B, H, V ports

Component Connection: connecting the PR, Y, PB ports

- 7) **BNC/COMPONENT IN [R/Pr, G/Y, B/Pb, H, V] (BNC/Component Connection Terminal (Input))**



- 8) **AV AUDIO IN [L-AUDIO-R] (LCD Display Audio Connection Terminal (Input))**

- 9) **AV OUT [VIDEO] (VIDEO Connection Terminal): AV mode (Output)**

- 10) **AV IN [VIDEO] (VIDEO Connection Terminal) (Input)**

- 11) **AV OUT [S-VIDEO] (S-VIDEO Connection Terminal): S-VIDEO mode (Output)**

- 12) **AV IN [S-VIDEO] (S-VIDEO Connection Terminal) (Input)**

- 13) **EXT SPEAKER(8 Ω)[- L - +, - R - +] (EXT Speaker Connection Terminal)**

- 14) **AUDIO OUT [L-AUDIO-R] (LCD Display Audio Connection Terminal (Output))**

AUDIO OUT is the terminal for sound output of PC, DVI or BNC.



- 15) **POWER S/W ON [|] / OFF [O]**

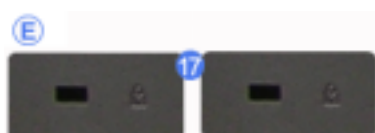
Switches the LCD Display On/Off.

- 16) **POWER IN**

The power cord plugs into the LCD Display and the wall plug.

Note

- The number of LCD Displays that can be connected to loopout may differ depending on the cables, signal source etc. With cables where there is no degradation or signal source, up to ten LCD Displays can be connected.



- 17) **Kensington Lock**

The Kensington lock is a device used to physically fix the system to something when using it in a public place. (The locking device has to be purchased separately.)

For using a locking device, contact the place of purchase.

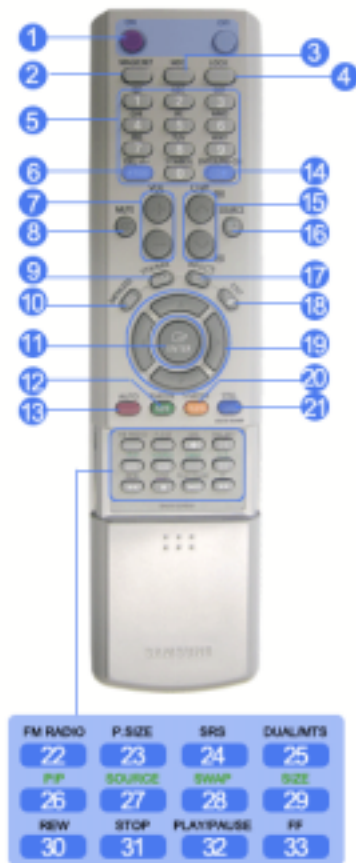
☑ Note

- See [Connecting the LCD Display](#) for further information regarding cable connections.

➤ Remote Control

☑ Note

- The performance of the remote control may be affected by a TV or other electronic device operating near the LCD Display , causing a malfunction due to interference with the frequency.



1. ON / OFF
2. MAGICNET
3. MDC
4. LOCK
5. MagicNet buttons
- 6.+100 -/--
7. VOL
8. MUTE
9. TTX/MIX
10. MENU
11. ENTER
12. P.MODE
13. AUTO
14. PRE-CH
15. CH/P
16. SOURCE
17. INFO
18. EXIT
19. Up-Down Left-Right buttons
20. S.MODE
21. STILL
22. FM RADIO
23. P.SIZE
24. SRS
25. DUAL/MTS
26. PIP
27. SOURCE
28. SWAP
29. SIZE
30. REW
31. STOP
32. PLAY/PAUSE
33. FF

1) ON / OFF

Turns the LCD Display On/Off.

2) MAGICNET

MagicNet Quick Launch Button.

- This function does not work for this monitor.

3) MDC

MDC Quick Launch Button.

4) LOCK

Activates or deactivates all function keys on both the remote TV control and the LCD Display except for the Power and LOCK buttons.

5) MagicNet buttons

Used for MagicNet.

- Alphanumeric: Used to enter the Internet address.
- DEL: Functions as the backspace.
- SYMBOL: Used to enter the symbols. (.O_-)
- ENTER: Used to enter values.

- This function does not work for this monitor.

6) +100 -/--

Press to select channels over 100.

For example, to select channel 121, press "+100", then press "2" and "1".

- This function does not work for this monitor.

7) **VOL**

Adjusts the audio volume.

8)  **MUTE**

Pauses (mutes) the audio output temporarily.

This is displayed on the lower left corner of the screen.

The audio resumes if MUTE or - VOL + is pressed in the Mute mode.

9)  **TTX/MIX**

TV channels provide text information services via teletext.

- This function does not work for this monitor.

10)  **MENU**

Opens the on-screen menu and exits from the menu screen or closes the screen adjustment menu.

11)  **ENTER**

Activates a highlighted menu item.

12)  **P.MODE**

When you press this button, current picture mode is displayed on the lower center of the screen.

AV / S-Video / Component : P.MODE

The Monitor has four automatic picture settings that are preset at the factory.

Then push button again to circle through available preconfigured modes.

(Dynamic → Standard → Movie → Custom)

PC/DVI/BNC : M/B (MagicBright™)

MagicBright™ is a new feature providing the optimum viewing environment depending on the contents of the image you are watching.

Then push button again to circle through available preconfigured modes.

(Entertain → Internet → Text → Custom)

13) **AUTO**

Adjusts the screen display automatically in PC mode.

By changing the resolution in the control panel, auto function is performed.

14)  **PRE-CH**

Returns to the immediately previous channel.

- This function does not work for this monitor.

15)  **CH/P**

In TV mode, selects TV channels.

- This function does not work for this monitor.

16)  **SOURCE**

Changes the video source.

17)  **INFO**


The current picture information is displayed in the top left corner of the screen.

18)  **EXIT**

Exits from the menu screen.

19) **Up-Down Left-Right buttons**

Moves from one menu item to another horizontally, vertically or adjusts selected menu values.

20)  **S.MODE**

When pressing this button, the current mode is displayed at the bottom centre of the screen.

The LCD Display has a built-in high fidelity stereo amplifier.

Then press the button again to circle through available preconfigured modes.

(Standard → Music → Movie → Speech → Custom)

21) **STILL**

Press the button once to freeze the screen. Press it again to unfreeze.

22) **FM RADIO**

Turns the FM Radio on/off.

In PC/DVI mode, sets the SOUND to FM Radio.

In general Video mode, selects FM Radio, and turns off the screen.

In areas where the signal is weak, noise may occur during FM radio broadcasts.

- This function does not work for this monitor.

23) **P.SIZE**

Press to change the screen size.

24)  **SRS**

SRS

25)  **DUAL/MTS**

DUAL-

STEREO/MONO, DUAL I / DUAL II and MONO/NICAM MONO/NICAM STEREO can be operated depending on the broadcasting type by using the DUAL button on the remote control while watching TV.

MTS-

You can select MTS (Multichannel Television Stereo) mode.

	Audio Type	MTS/S_Mode	Default
FM Stereo	Mono	Mono	Manual Change
	Stereo	Mono ↔ Stereo	
	SAP	Mono ↔ SAP	Mono

- This function does not work for this monitor.

26)  **PIP**

Every time you press the button, a PIP screen appears.

27)  **SOURCE**

Changes the source of the PIP window signal.

28) **SWAP**

Swaps the contents of the PIP and main image.

The image in the PIP window will appear on the main screen, and the main screen image will appear in the PIP window.

29)  **SIZE**

Switches the PIP Picture Size.

30)  **REW**

Rewind

31)  **STOP**

Stop

32)  **PLAY / PAUSE**

Play/Pause

33)  **FF**

Fast forward



- Safety Instructions
- Introduction
- Connections
- Installing the Stand KIT
- Connecting the LCD Display
- Using the Software
- Adjusting the LCD Display
- Troubleshooting
- Specifications
- Information
- Appendix

SyncMaster

www.samsung.com

The color and appearance of the product may vary depending on the model, and the product specifications are subject to change without prior notice for reasons of performance enhancement.

Connections

Model
SyncMaster 320PX



Installing the Stand KIT

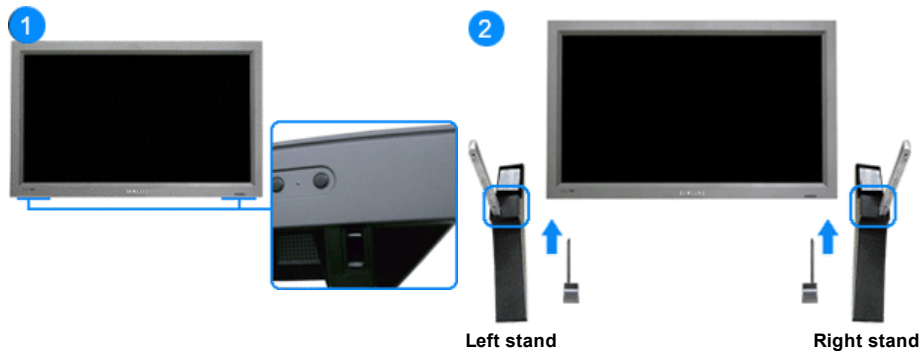
Note

- Only the supplied bolts should be used.

Caution

Samsung Electronics will not be responsible for damages caused by using a base other than those specified.

▸ Installing the Semi Stand



Caution

Make sure to install the stand with the Caution label folded backwards.

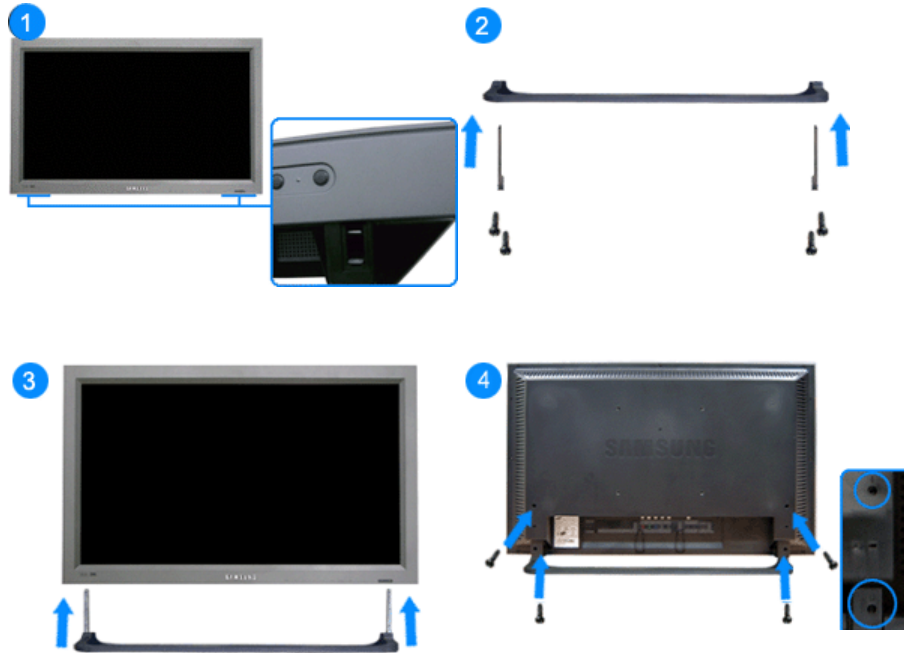


- 1) A 'Cover-Protector' is used to protect the hole at the bottom of the LCD Display, where the stand is inserted. Be sure to remove the 'Cover-Protector' when attaching the provided Semi Stand or Stand KIT (sold separately) and cover the hole using the 'Cover-Hole' when attaching the wall mount kit.
- 2) Set up the left and right stands respectively.
- 3) Insert the stand into the hole at the bottom of the LCD Display. Insert the screw into the hole indicated and tighten it. (M4 x L15)

Caution

This stand is designed for adjusting the screen angle. The company is not responsible for any problem caused when using this stand. Under no circumstances use the product as a stand for placing something on.

› **Installing the Stand KIT (sold separately)**



- 1) A 'Cover-Protector' is used to protect the hole at the bottom of the LCD Display , where the stand is inserted. Be sure to remove the 'Cover-Protector' when attaching the provided Semi Stand or Stand KIT (sold separately) and cover the hole using the 'Cover-Hole' when attaching the wall mount kit.
- 2) Ensure that the parts are inserted in the right direction and in the right place. (M4 x L15)
- 3) Insert the stand into the hole at the bottom of the LCD Display.
- 4) Insert the screw into the hole indicated and tighten it. (M4 x L15)

Connecting the LCD Display

▶ **Using a Power cord with Earth**

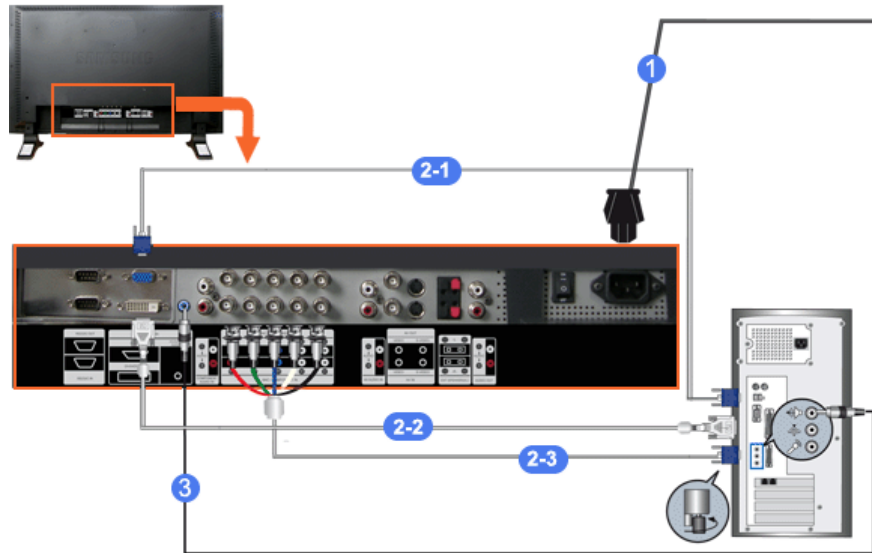
In the event of failure, the earth lead may cause electric shock. Make sure to wire the earth lead in correctly, before connecting the AC power. When un-wiring the earth lead, make sure to disconnect the AC power in advance.



Note

- AV input devices such as DVD players, VCR's or camcorders as well as your computer can be connected to the LCD Display. For detailed information on connecting AV input devices, refer to the User Controls under Adjusting Your LCD Display.

› **Connecting to a Computer**



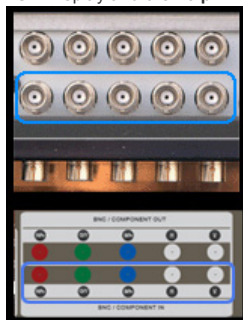
- 1) Connect the power cord for your LCD Display to the power port on the back of the LCD Display. Turn on the power switch.
- 2) There are 3 ways to connect the D-sub to your LCD Display. Choose one of the following:
 - 2-1) Using the D-sub (Analog) connector on the video card. Connect the D-sub to the 15-pin, **RGB port** on the back of your LCD Display and the **15 pin D-sub Port** on the computer.



- 2-2) Using the DVI (Digital) connector on the video card. Connect the DVI Cable to the **DVI(HDCP) port** on the back of your LCD Display and the **DVI port** on the computer.



- 2-3) Using the BNC (Analog) connector on the video card. Connect the BNC Cable to the **BNC/COMPONENT IN - R, G, B, H, V ports** on the back of your LCD Display and the **15 pin D-sub Port** on the computer.



- 3) Connect the audio cable for your LCD Display to the audio port on the back of your computer.

Note

- Turn on both your computer and the LCD Display.

Note

- The DVI cable or BNC cable is optional. Contact a local Samsung Electronics [Service Center](#) to buy optional items.

› Connecting Digital DVD



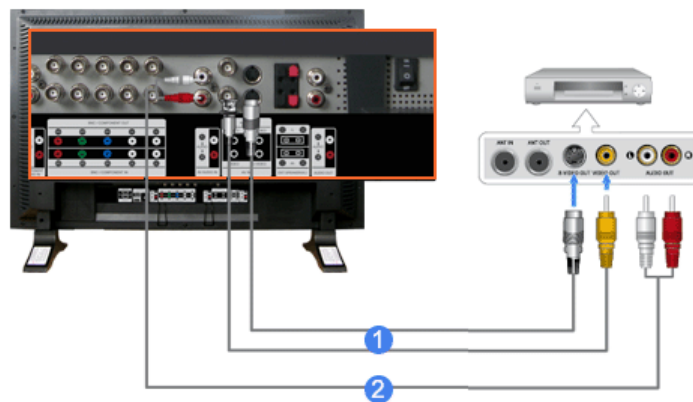
☑ Note

- Input devices such as digital DVD are connected to the DVI IN terminal of the monitor using the DVI cable.
- Then, start the DVD with a DVD disc inserted.
- Select Digital using the SOURCE button.

☑ Note

- The monitor has DVI IN connection terminals to connect DVI input devices digital DVD.

› Connecting to a VCR



- 1) AV input devices such as VCRs or Camcorders are connected via the **AV IN [VIDEO]** or **AV IN [S-VIDEO]** of the LCD Display using an S-VHS or BNC cable.
- 2) Connect the Audio (L) and Audio (R) terminals of a VCR or Camcorders to the LCD Display's **AV AUDIO IN [L-AUDIO-R]** using audio cables.

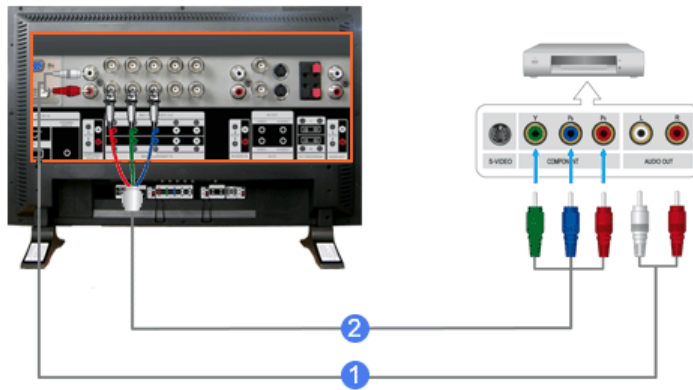
☑ Note

- Select **AV** or **S-Video** for a connected VCR or Camcorder using the SOURCE button on the front of the LCD Display or on the remote control.
- Then, start the VCR or Camcorders with a tape inserted.

☑ Note

- The S-VHS or BNC cable is optional.

› Connecting to a DVD Player



- 1) Connect a set of audio cables between the **COMPONENT AUDIO IN [L-AUDIO-R]** on the LCD Display and the **AUDIO OUT** jacks on the DVD player.
- 2) Connect a Component cable between the **BNC/COMPONENT IN - PR, Y, PB port** on the LCD Display and the **PR, Y, PB jacks** on the DVD player.

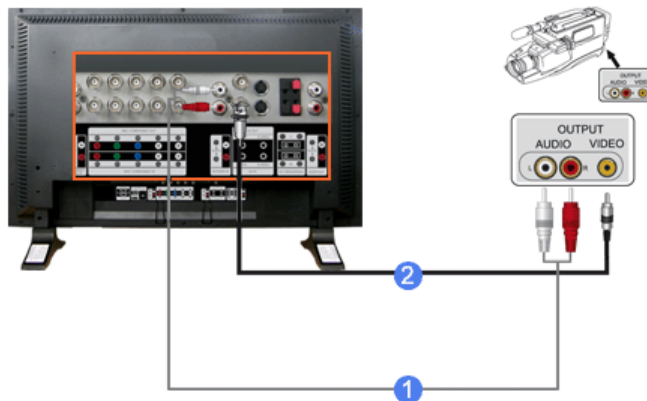
Note

- Select **Component** for the connection to a DVD player using the **SOURCE** button on the front of the LCD Display or on the remote control.
- Then, start the DVD Player with a DVD disc inserted.

Note

- A component cable is optional.
For an explanation of Component video, consult your DVD manual.

» **Connecting to a Camcorder**



- 1) Locate the A/V output jacks on the camcorder. They are usually found on the side or back of the camcorder.
Connect a set of audio cables between the **AUDIO OUTPUT** jacks on the camcorder and the **AV AUDIO IN [L-AUDIO-R]** on the LCD Display.
- 2) Connect a video cable between the **VIDEO OUTPUT** jack on the camcorder and the **AV IN [VIDEO]** on the LCD Display.

Note

- Select **AV** for the Camcorder connection using the **SOURCE** button on the front of the LCD Display or on the remote control.
- Then, start the Camcorders with a tape inserted.

Note

- The audio-video cables shown here are usually included with a Camcorder.

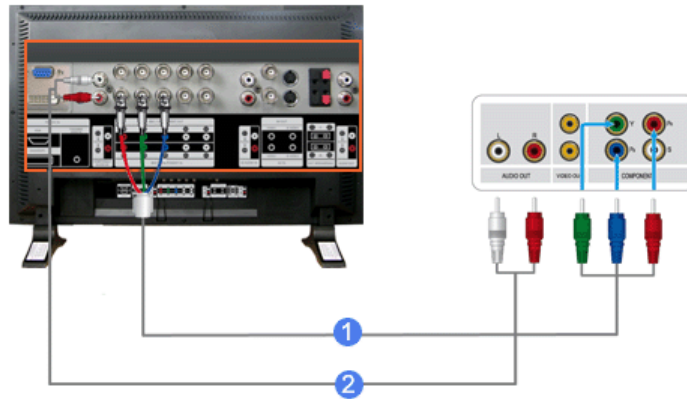
(If not, check your local electronics store.)

If your camcorder is stereo, you need to connect a set of two cables.

✧ Connecting to a DTV Set Top Box

Note

- The connections for a typical Set Top Box are shown below.



- 1) Connect a Component cable between the **BNC / COMPONENT IN - PR, Y, PB** port on the LCD Display and the PR, Y, PB jacks on the Set Top Box.
- 2) Connect a set of audio cables between the **COMPONENT AUDIO IN [L-AUDIO-R]** on the LCD Display and the AUDIO OUT jacks on the Set Top Box.

Note

- Select **Component** for the connection to a DTV Set Top Box using the SOURCE button on the front of the LCD Display or on the remote control.

Note

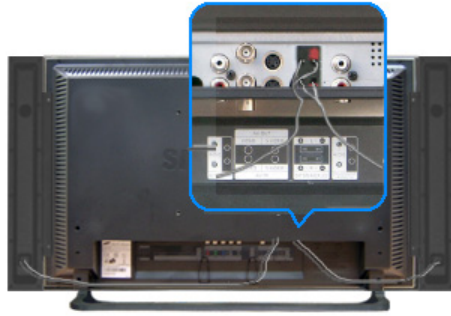
- For an explanation of Component video, see your Set Top Box owner's manual.

✧ Connecting Speakers



Note

- Fasten the SET and the speaker using the screws.
* Mount the speaker set without the speaker stand.



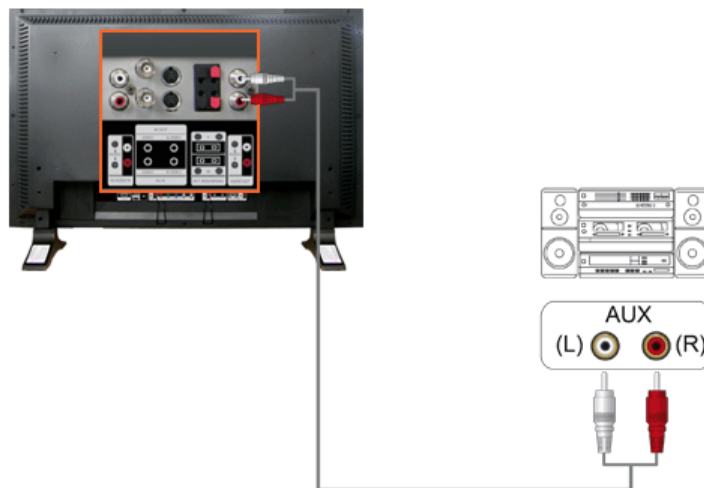
☑ Note

- Connect the speaker connection cable between the speaker connection jack on the back of the SET and the speaker connection jack on the back of the speaker.

☑ Note

- Do not move the SET while the SET is connected to the speakers.
The speaker-bracket for connecting the SET speaker may become damaged.

➤ Connecting to an Audio System



☑ Note

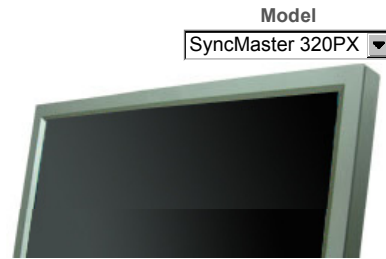
- Connect a set of audio cables between the AUX L, R jacks on the **AUDIO SYSTEM** and the **AUDIO OUT [L-AUDIO-R]** on LCD Display.



[Safety Instructions](#)
[Introduction](#)
[Connections](#)
[Using the Software](#)
[Adjusting the LCD Display](#)
[Troubleshooting](#)
[Self-Test Feature Check](#)
[Check List](#)
[Q & A](#)
[Specifications](#)
[Information](#)
[Appendix](#)

SyncMaster

www.samsung.com



The color and appearance of the product may vary depending on the model, and the product specifications are subject to change without prior notice for reasons of performance enhancement.

Troubleshooting

Self-Test Feature Check

Note

- Check the following items yourself before calling for assistance. Contact a Service Center for problems that you cannot solve by yourself.

▸ Self-Test Feature Check

Your LCD Display provides a self test feature that allows you to check whether your LCD Display is functioning properly.

- 1) Turn off both your computer and the LCD Display.
- 2) Unplug the video cable from the back of the computer.
- 3) Turn on the LCD Display.

The figure shown below ("Check Signal Cable") appears on a black background when the LCD Display is working normally even though no video signal is detected: While in the Self-Test mode, the LED power indicator remains green and the figure moves around on the screen.



- 4) Turn off your LCD Display and reconnect the video cable; then turn on both your computer and the LCD Display

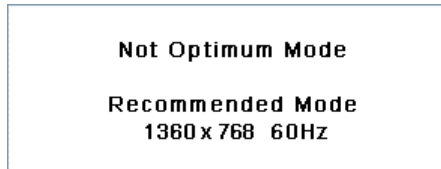
If your LCD Display screen remains blank after using the previous procedure, check your video controller and computer system; **your LCD Display is functioning properly.**

▸ Check Cooling System

If the "**Check Cooling System**" message is displayed on the screen, this is because the cooling fan has a problem. Contact a service center to repair or replace the fan.

▸ Not Optimum Mode

You can even view the screen at a resolution of 1360 x 768. However, you will receive the following message for a minute; You can choose to change the screen resolution or stay in the current mode during that time. And if the resolution is more than 85Hz, you will see the black screen because the LCD Display does not support over 85Hz.



Note

- Refer to [Specifications](#) > [Preset Timing Modes](#) for the resolutions or frequencies supported by the LCD Display.

✦ **Maintenance and Cleaning**

- 1) Maintaining the LCD Display Case.
Clean with a soft cloth after disconnecting the power cord.



- Do not use benzene, thinner or other flammable substances, or a wet cloth.
- We recommend that a Samsung cleansing agent is used to prevent damage to the screen.

- 2) Maintaining the Flat Panel Display Screen.
Clean with a soft cloth (cotton flannel) smoothly.



- Never use acetone, benzene or thinner.
(They may cause flaws or deformation of the screen surface.)
- The user will be required to pay costs and related expenses for repairing damages caused.

✦ **Symptoms and Recommended Actions**

Note

- A LCD Display recreates visual signals received from the computer. Therefore, if there is a problem with the computer or the video card, this can cause the LCD Display to become blank, have poor coloring, become noisy, and video mode not supported, etc. In this case, first check the source of the problem, and then contact a [Service Center or your dealer](#).

- 1) Check if the power cord and the video cables are properly connected to the computer.
- 2) Check if the computer beeps more than 3 times when booting.
(If it does, request an a service for the main board of the computer.)
- 3) If you installed a new video card or if you assembled the PC, check if you installed the Adaptor(video).
- 4) Check if the scanning ratio of the video screen is set to between 50 Hz ~ 85 Hz.
(Do not exceed 60Hz when using the maximum resolution.)
- 5) If you have problems in installing the Adaptor (video) driver, boot the computer in Safe Mode, remove the Display Adaptor in the "Control Panel, System, Device Administrator" and then reboot the computer to reinstall the Adaptor (video) driver.

Check List

Note

- The following table lists possible problems and their solutions. Before calling for assistance, check the information in this section to see if you can remedy any problems for yourself. If you do need assistance, [please call the phone number on the Information section or contact your dealer](#).

▸ Problems related to the Installation (PC Mode)

☑ Note

- Problems related to the LCD Display installation and their solutions are listed.

Problems	Solutions
The LCD Display screen flickers.	<ul style="list-style-type: none">• Check if the signal cable between the computer and the LCD Display is securely connected. (Refer to Connecting a Computer)

▸ Problems related to the Screen

☑ Note

- Problems related to the LCD Display screen and their solutions are listed.

Problems	Solutions
The screen is blank and the power indicator is off.	<ul style="list-style-type: none">• Ensure that the power cord is firmly connected and the LCD LCD Display is on. (Refer to the Connecting the LCD Display)
"Check Signal Cable" message.	<ul style="list-style-type: none">• Ensure that the signal cable is firmly connected to the PC or video sources. (Refer to the Connecting the LCD Display)• Ensure that the PC or video sources are turned on.
"Not Optimum Mode " message.	<ul style="list-style-type: none">• Check the maximum resolution and the frequency of the video Adaptor.• Compare these values with the data in the Preset Timing Modes Chart.
The picture rolls vertically.	<ul style="list-style-type: none">• Check if the signal cable is securely connected. Re-connect it, if necessary. (Refer to Connecting a Computer)
The image is not clear; picture is blurred.	<ul style="list-style-type: none">• Run Frequency Coarse and Fine tuning.• Turn on again after removing all accessories (video extension cable, etc.)• Set the resolution and frequency to the recommended ranges.
The picture image is unstable and shakes.	<ul style="list-style-type: none">• Check if the resolution and frequency set for the computer video card falls in the range supported by the LCD Display. If not, reset them referring to the current Information under the LCD Display menu and Preset Timing Modes.
Ghost images are shown in the picture.	
The image is too light or too dark.	<ul style="list-style-type: none">• Adjusts the brightness and contrast. (Refer to the Brightness, Contrast)
The screen color is inconsistent.	
The color image is distorted by dark shadows.	<ul style="list-style-type: none">• Adjust color using Custom under OSD Color Adjustment menu.
The color white is poor.	
The power Indicator blinks green.	<ul style="list-style-type: none">• The LCD Display is currently saving the changes made to the settings to the OSD memory.
The screen is blank and the power indicator light is steady green or blinks every 0.5 or 1 seconds.	<ul style="list-style-type: none">• The LCD Display is using its power management system.• Press a key on the keyboard.

The screen is blank and it is blinking.

- If you see the "TEST GOOD" message on the screen when you pressing the MENU button, check the cable connection between the LCD Display and the computer to ensure that the connector is properly connected.

▸ Problems related to Audio

Note

- Problems related to audio signals and their solutions are listed below.

Problems	Solutions
No sound.	<ul style="list-style-type: none">• Ensure that the audio cable is firmly connected to both the audio-in port on your LCD Display and the audio-out port on your sound card. (Refer to the Connecting the LCD Display)• Check the volume level.
The sound level is too low.	<ul style="list-style-type: none">• Check the volume level.• If the volume is still too low after turning the control to its maximum, check the volume control on the computer sound card or software program.
The sound is too high or too low.	<ul style="list-style-type: none">• Adjusts the Treble and Bass to the appropriate levels.

▸ Problems related to the Remote Control

Note

- Problems related to the remote control and their solutions are listed.

Problems	Solutions
The remote control buttons do not respond.	<ul style="list-style-type: none">• Check the polarities (+/-) of the batteries.• Check if the batteries are empty.• Check if the power is on.• Check if the power cord is securely connected.• Check if a special fluorescent or neon lamp is on in the vicinity.

Q & A

Question	Answer
How can I change the frequency?	<p>The frequency can be changed by reconfiguring the video card.</p> <p>Note that video card support can vary, depending on the version of the driver used. (Refer to the computer or the video card manual for details.)</p>
How can I Adjust the resolution?	<ul style="list-style-type: none">• Windows XP: Set the resolution in the Control Panel → Appearance and Themes → Display → Settings.• Windows ME/2000: Set the resolution in the Control Panel → Display → Settings. * Contact the video card manufacturer for details.
How can I set the Power Saving function?	<ul style="list-style-type: none">• Windows XP: Set the resolution in the Control Panel → Appearance and Themes → Display → Screen Saver. Set the function in the BIOS-SETUP of the computer. (Refer to the Windows / Computer Manual).• Windows ME/2000: Set the resolution at the Control Panel → Display → Screen Saver. Set the function in the BIOS-SETUP of the computer. (Refer to

the Windows / Computer Manual).

How can I clean the outer case/LCD Panel?

Disconnect the power cord and then clean the LCD Display with a soft cloth, using either a cleaning solution or plain water.

Do not leave any detergent or scratches on the case. Do not let any water enter the LCD Display.

© 1995~2007 SAMSUNG. ALL Rights Reserved